



205 Executive Court
Little Rock, Arkansas 72205
Telephone (501) 664-1552
Fax (501) 664-8579
www.cristengineers.com

Stewart W. Noland
Leslie B. Price
Matthew D. Dunn
Craig A. Johnson

August 15, 2017

Ms. Bailey Taylor
Enforcement Analyst
Arkansas Department of Environmental Quality
5301 Northshore Drive
North Little Rock, AR 72118-5317

RE: City of Walnut Ridge
LIS 17-040, AFIN 38-00040, Permit No. AR0046566
Quarterly Report 2017-01

Dear Ms. Taylor:

In accordance with the requirements of the Consent Administrative Order (CAO) LIS No. 17-040 with the Arkansas Department of Environmental Quality dated on May 25, 2017, we submit herewith the first quarterly report.

1. Commenced development of GIS sewer map. (Attached)
2. Submitted request to ADEQ to obtain preliminary NPDES discharge parameters for a outfall on the Black River near Portia, Arkansas; August 2, 2017.
3. Submitted Corrective Action Plan; August 10, 2017.
4. Scheduled Engineering Procurement Advertisement with local paper; August 15, 2017.

Should you have any questions regarding this correspondence plan please don't hesitate to contact me at 501.664.1552 or 501.993.2922.

Sincerely,
Crist Engineers, Inc.

A handwritten signature in blue ink, appearing to read "Craig A. Johnson, P.E.", is written over a circular blue stamp. The stamp contains the text "Craig A. Johnson, P.E." and "Associate" in a smaller font.

Craig A. Johnson, P.E.
Associate

Cc: Jon Kopp, City Water Works



WALNUT RIDGE, AR Existing Sewer System

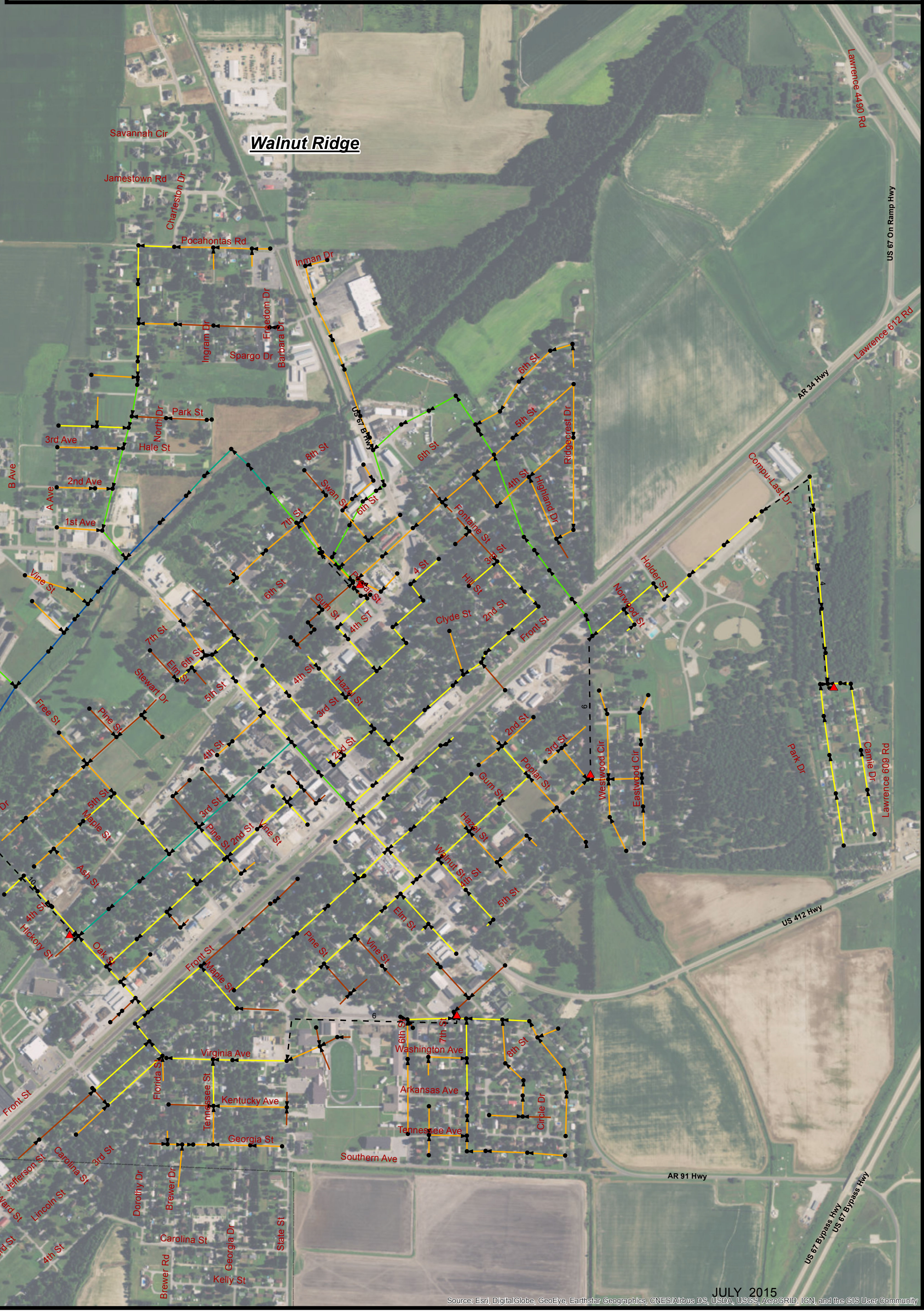
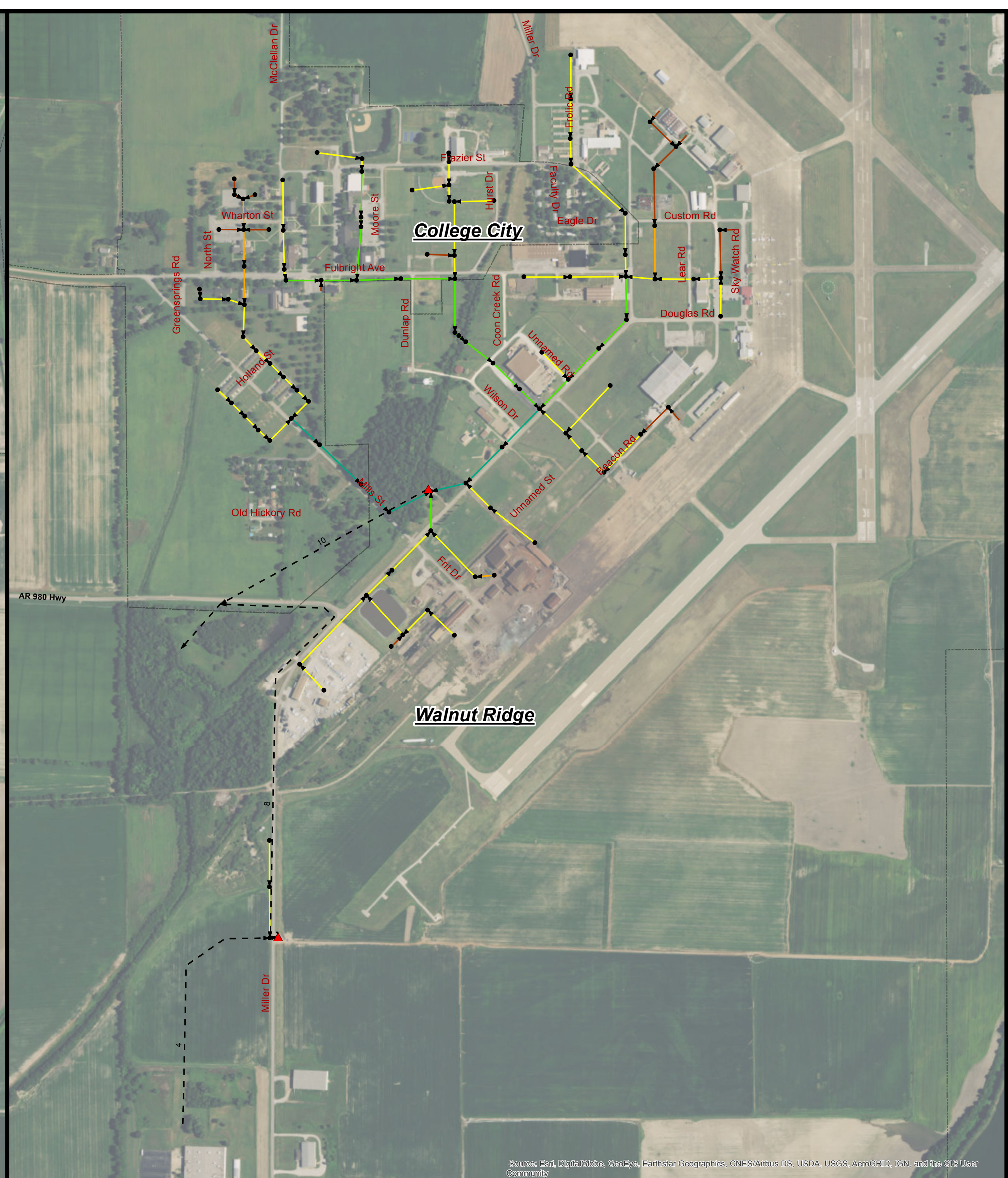
- Force Main
- ▲ Pump Station
- Manhole

Gravity Sewer

- Undefined
- 6"
- 8"
- 10"
- 12"
- 15"



1 inch = 600 feet



12/27/2016 10:01 AM PROJECTS\1603 - WALNUT RIDGE\1603\1603 - CRIST\GIS\WALNUT_RIDGE_SEWER\MAP\POD\MAP\WATER

JULY 2015

Source: Esri, DigitalGlobe, GeoEye, Earthstar Geographics, CNES/Airbus DS, USDA, USGS, AeroGRID, IGN, and the GIS User Community